

**FORD**

**F-Series Service body**

**Aerial Equipment Device**



illustrated with options



**Reach higher than ever**

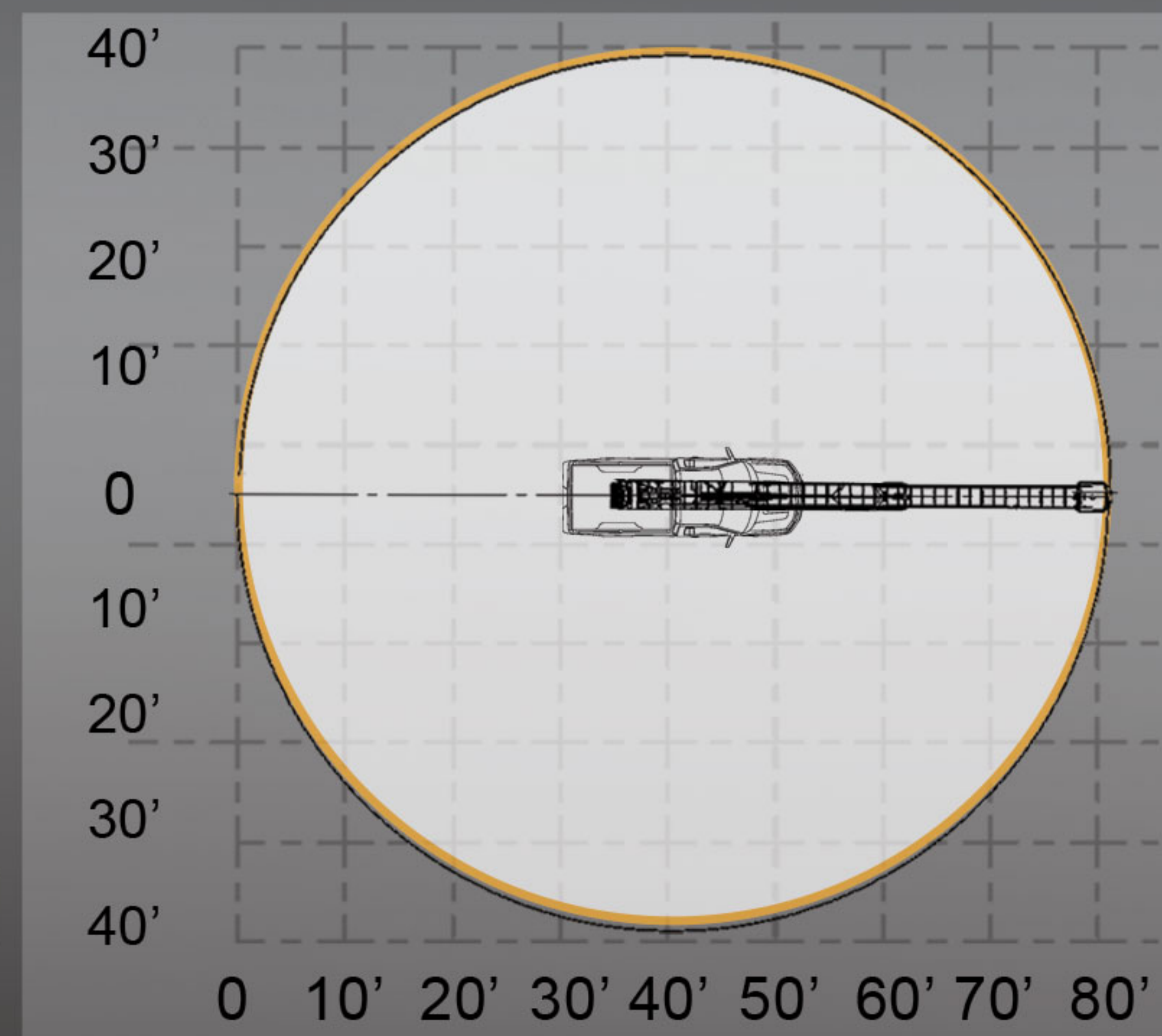
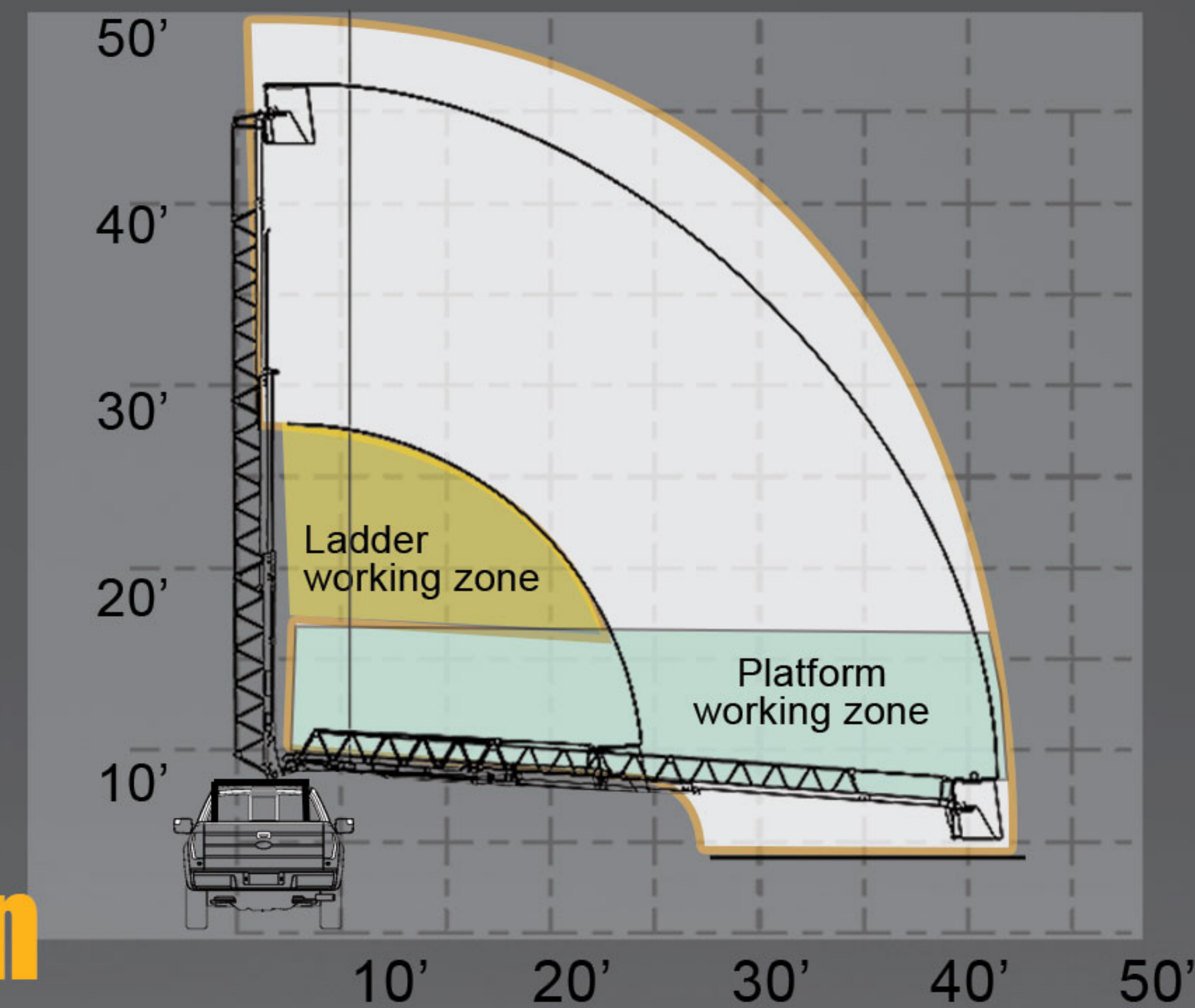




## Service Body Mounted Aerial

- **Lightweight rugged unit**
- **Low maintenance**
- **Finest design & technologies**
- **Can access narrow spaces**
- **Fast and efficient intervention**
- **Light truck setup**
- **Independent hydraulic & Battery operated**

Great  
**80'**  
Operating  
Diameter





**MULTIPLYING  
POSSIBILITIES**

**Bridge  
mounted**



## **Combined Configurations**

RH bridge-mount design allows Multiple configurations on rear platform area without a pedestal in the way. Shelving and storage can be customized to match customer needs.

\*ILLUSTRATED WITH OPTIONS

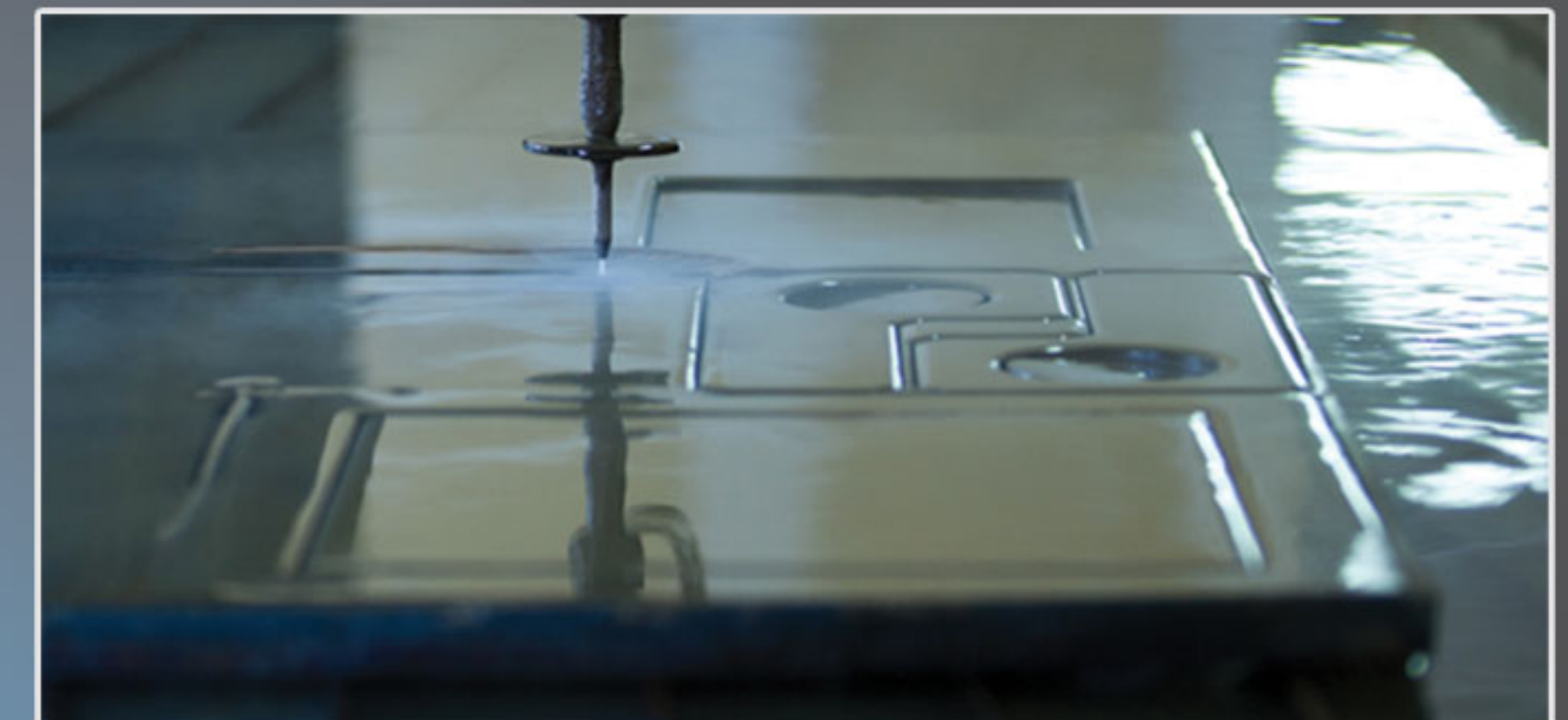




## High Precision Manufacturing

Accuracy is crucial to achieve consistent quality. RH Ladder uses waterjet and laser cutting, along with robotic welding to deliver constant precision and reliability.

**Waterjet  
cutting  
accuracy**



**Robotic  
welding  
technology**



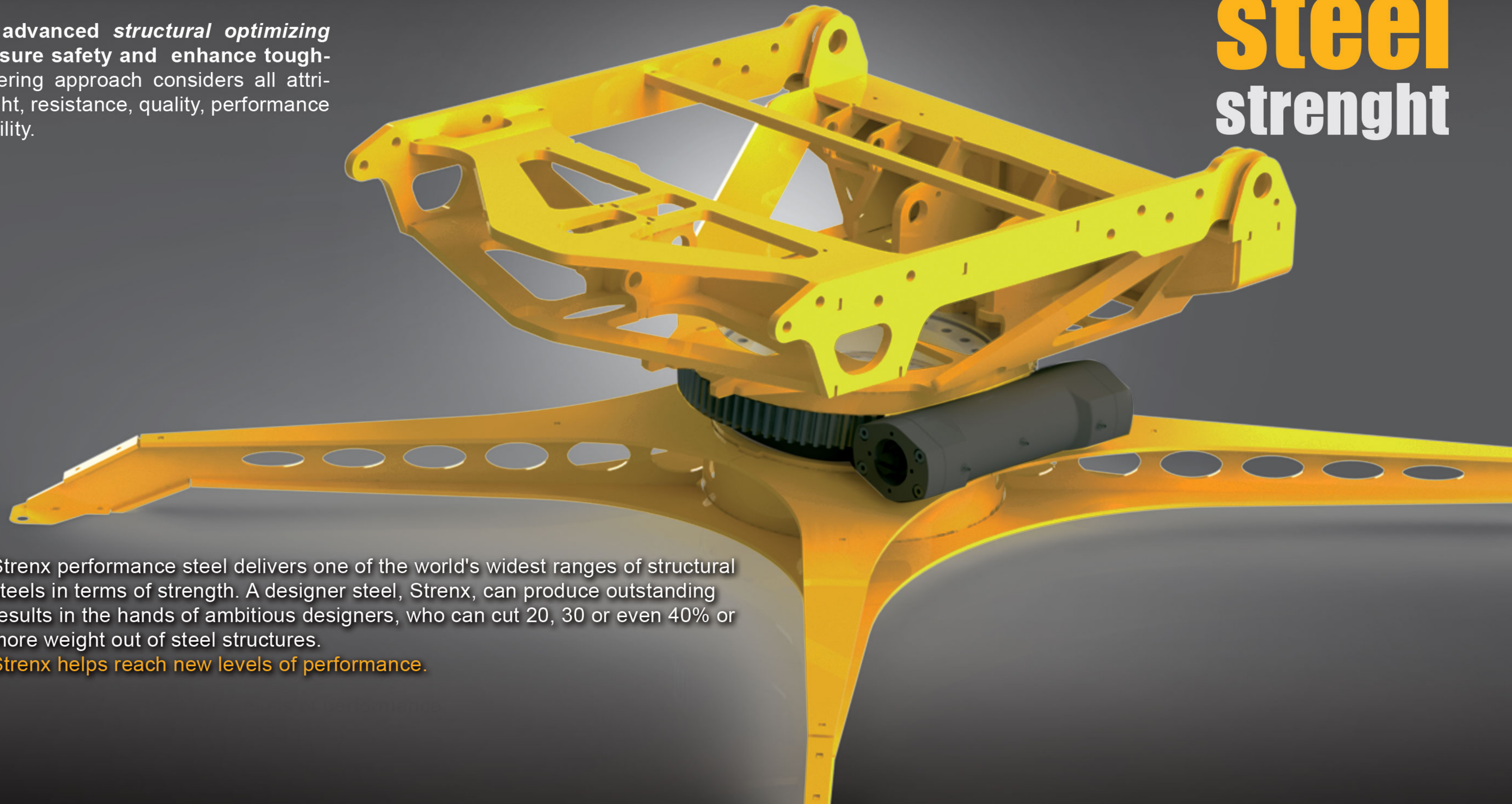




## Optimized Design & Engineering

RH Ladder uses advanced *structural optimizing simulations* to ensure safety and enhance toughness. Our engineering approach considers all attributes such as weight, resistance, quality, performance and manufacturability.

# Finest steel strenght



MY INNER +  
**STRENX™**

Strenx performance steel delivers one of the world's widest ranges of structural steels in terms of strength. A designer steel, Strenx, can produce outstanding results in the hands of ambitious designers, who can cut 20, 30 or even 40% or more weight out of steel structures.

*Strenx helps reach new levels of performance.*



## Specifications

**RHL37**

**RH38**

**RH38D**

Est. working height	37' (11.25 m )	38' (11.58 m)	38' (11.58 m)
Horizontal reach	27'4" (8.32 m )	27'6" (8.39 m)	27'6" (8.39 m)
Length (retracted)	16'4" (4.97 m)	15' (4.56 m)	15' (4.56 m)
Interior width	23" (60 cm )	19" (49 cm)	19" (49 cm)
Bucket capacity	350 lbs (159 kg )*	350 lbs (159 kg)*	350 lbs (159 kg)*
Lifting ring	n/a	550 lbs (250 kg)	550 lbs (250 kg)
Rotation	360° or continuous opt.	360° or continuous opt.	360° or continuous opt.
Elevation degrees	-8° to 80°	-8° to 80°	-8° to 80°
Approx. weight	1200 lbs (544 kg)	1100 lbs (498 kg)	1100 lbs (498 kg)
Hydraulic pressure	3000 psi (20685 kPa)	3000 psi (20685 kPa)	3000 psi (20685 kPa)
GVWR recommended	9500 lb (4309kg)	9500 lb (4309kg)	9500 lb (4309kg)

## Specifications

**RH41**

**RH44D**

**RH47**

**RH50D**

Est. working height	41' (12.5 m )	44' (13.41 m)	47' (14.33 m)	50' (15.24 m)
Horizontal reach	30'4" (9.25 m )	33' (10.05 m)	36.4' (11.07 m)	39' (11.88m)
Length (retracted)	14'4" (4.37 m)	17' (5.17 m)	17' (5.17 m)	19' (5.78m)
Interior width	19" (49cm )	19" (49 cm)	19" (49 cm)	19" (49 cm)
Bucket capacity	350 lbs (159 kg )*	350 lbs (159 kg)*	350 lbs (159 kg)*	350 lbs (159 kg)*
Lifting ring	550 lbs (250 kg)	550 lbs (250 kg)	550 lbs (250 kg)	550 lbs (250 kg)
Rotation	360° or continuous opt.	360° or continuous opt.	360° or continuous opt.	360° or continuous opt.
Elevation degrees	-8° to 80°	-8° to 80°	-8° to 80°	-8° to 80°
Approx. weight	1250 lbs (544 kg)	1350 lbs (498 kg)	1400 lbs (498 kg)	1450 lbs (498 kg)
Hydraulic pressure	3000 psi (20685 kPa)	3000 psi (20685 kPa)	3000 psi (20685 kPa)	3000 psi (20685 kPa)
GVWR recommended	11500lb (5216kg)	17500 lb (7938kg)	17500 lb (7938kg)	190000 lb (8620kg)







AEROSPACE  
**Aluminum**  
structural sections

**zero**  
**GAS**  
emission

**No outriggers\***    **No P.T.O**

Up to  
**50** ft.  
working height

Rotation  
**360**°  
capability



\* apply on most model depending trucks configurations

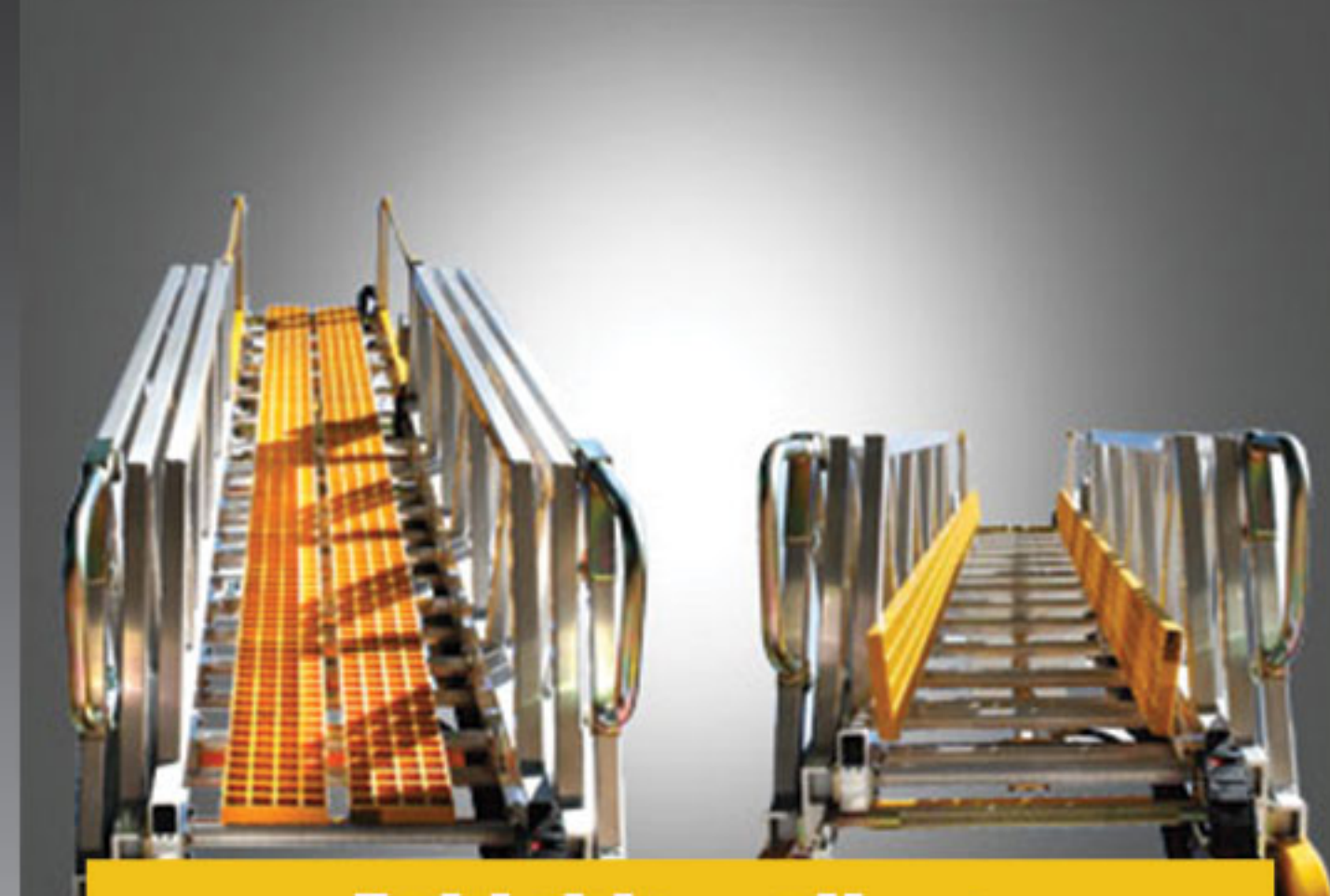




# Options & Accessories



**Tool box**



**Foldable walkway**



**Bucket cover**



**Platform**



**Bucket tent**



**Jib**



**Sign support**



**Battery tray**



**LiftUP**

LiftUP Aerial  
☎ 855-343-3229  
1445 Sheffler Dr  
Chambersburg, PA 17201 USA  
www.liftupaerial.com



RH Equipments  
☎ 450 582 8701  
89, rue du Parc Industriel  
Lanoraie, QC Canada J0K 1E0  
www.rh-ladder.com

distributed by:

- o 110 V outlet
- o Remote-control
- o Maximized AGM batteries
- o 550 lb capacity material hook (STD)
- o Auto-centering technology (STD)

**Other options available**

illustrated with options